

MANHOLE COVER

D400TC/600_001

MODEL: ROUND

CLASS | D400

NORM | EN 124-5:2015

(test load 40 ton) Carriageways of roads including pedestrian streets, hard shoulders and parking areas, for all types of road vehicles.

RESIN: self-extinguishing orthophthalic

MATRIX: glass fiber

PROCESS ADDITIVES AND REACTION PROMOTERS:

various additives

MANUFACTURING PROCESS:

SMC compression molding with prepregs



COVER

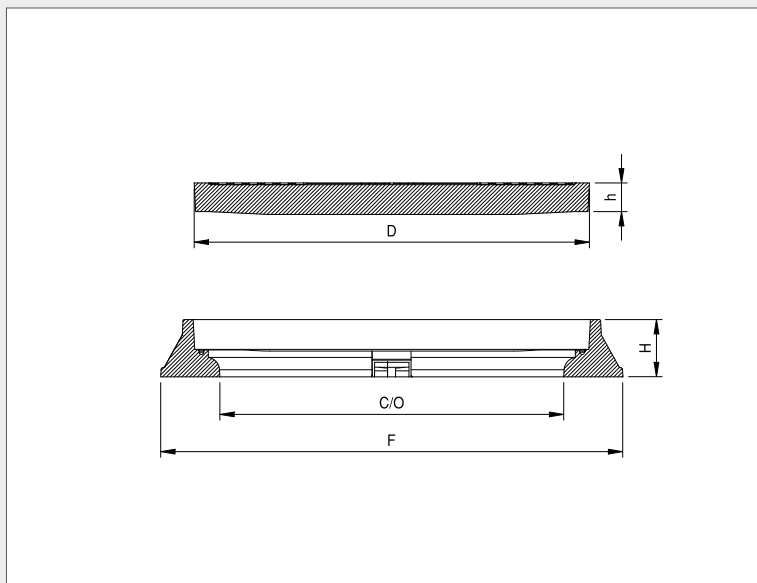
D	mm 690
h	mm 50

FRAME

F	mm 805
C/O	mm 600
H	mm 100

WEIGHT

COVER	kg 36,0
FRAME	kg 14,8
TOTAL	kg 50,8



SURFACE DESIGN

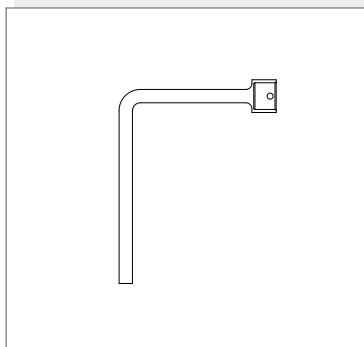
14x14 square with T01 treatment

COLOUR

black RAL 9011

LIFTING KEY

type 2



ACCESSORIES

FIXING:

1 hinge 180°+ lock

SEALING:

yes (EPDM)